

"THEATRON"
Convention & Cultural Centre
"Hellenic Cosmos"

TECHNICAL SHEET

ANTIGONE: MAIN AUDITORIUM

IPHIGENIA HALL

EQUIPMENT

ADMINISTRATION AND COMMUNICATION

ANTIGONE

MAIN AUDITORIUM

Capacity

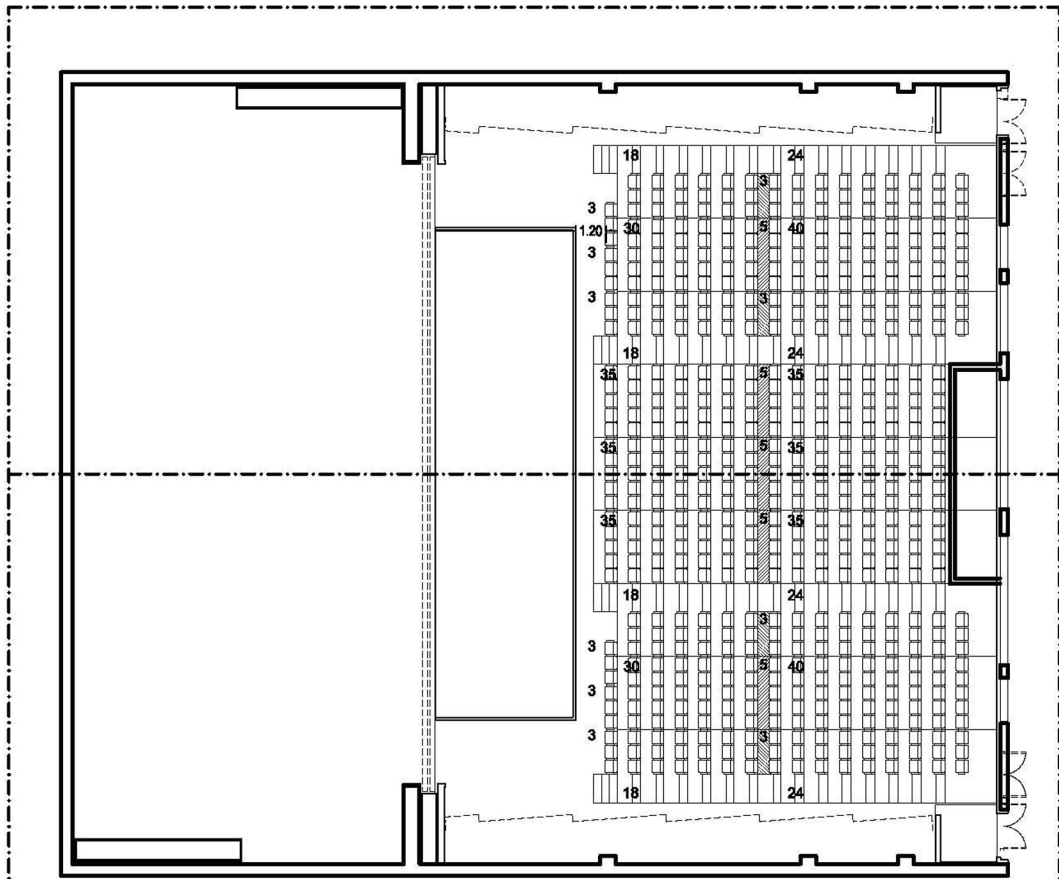
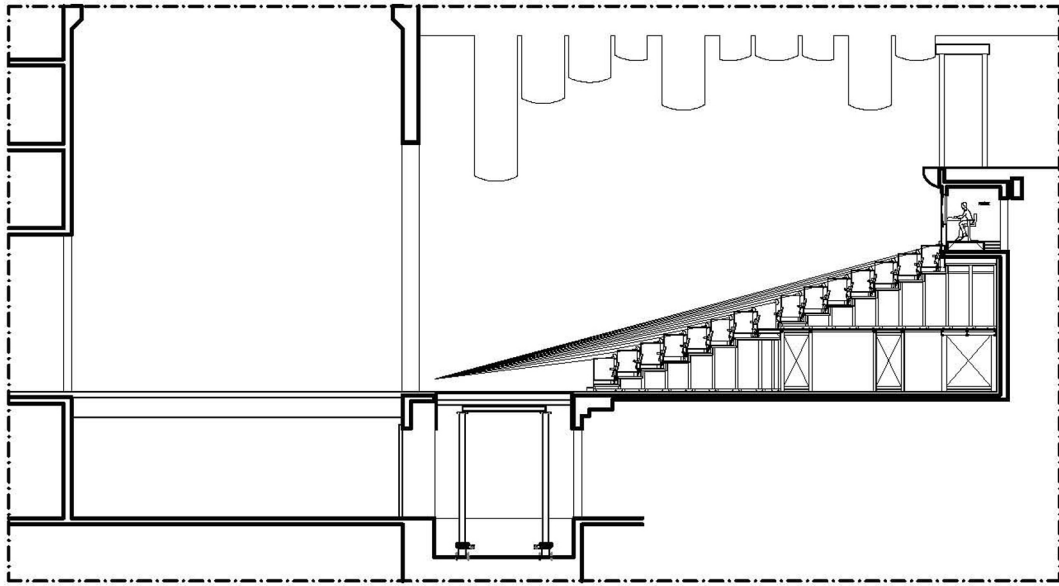
Retractable tier seating Hall

Possible configurations : frontal, bi-frontal, arena (quadri frontal), congress

Separating Stage area :

Capacity

Maximum	1.000 seats (classic configuration)
Main Auditorium	675 seats
Orchestra pit Area :	145 seats
Balcony:	180 seats



CAPACITY : 573 SEATS

TELECOPIQUE TIERS: 573 SEATS

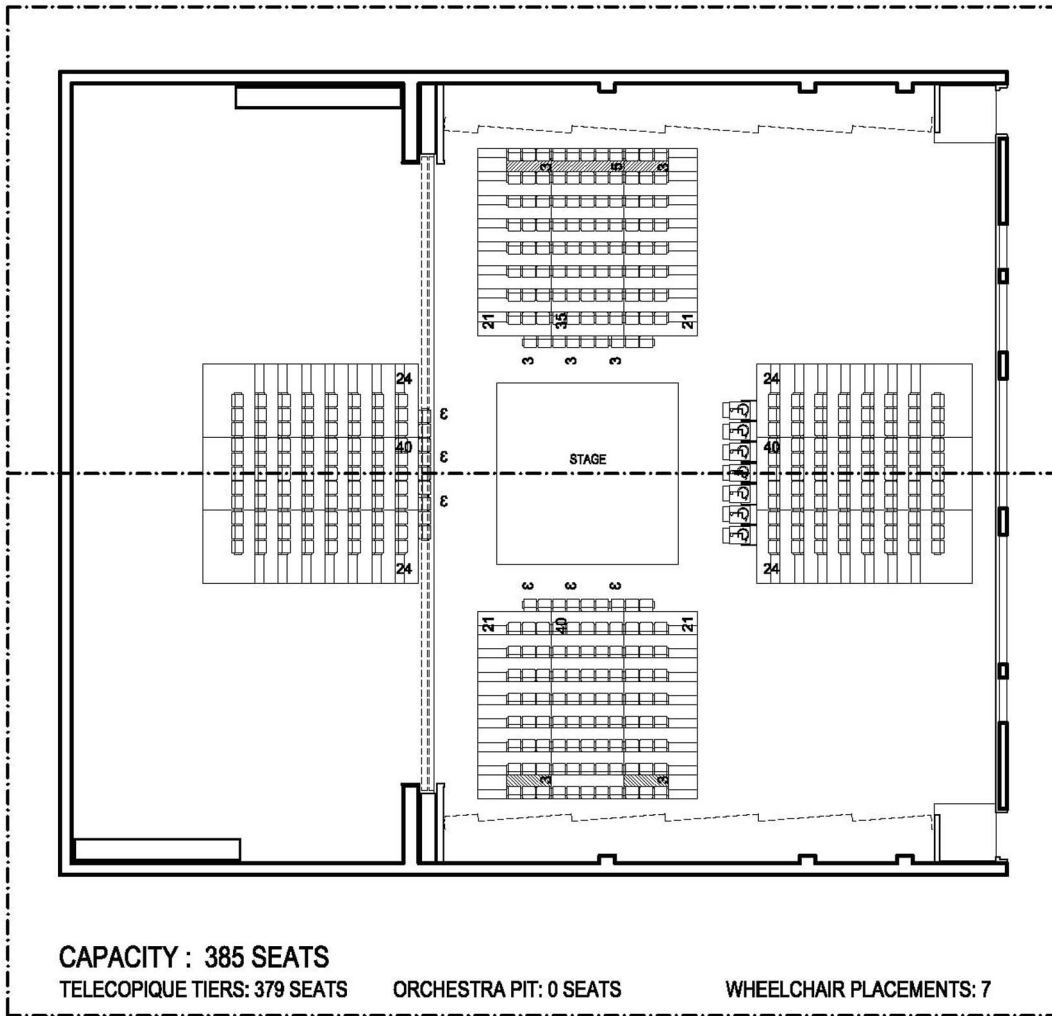
ORCHESTRA PIT: 0 SEATS

WHEELCHAIR PLACEMENTS: 0

THEATRON

Antigone

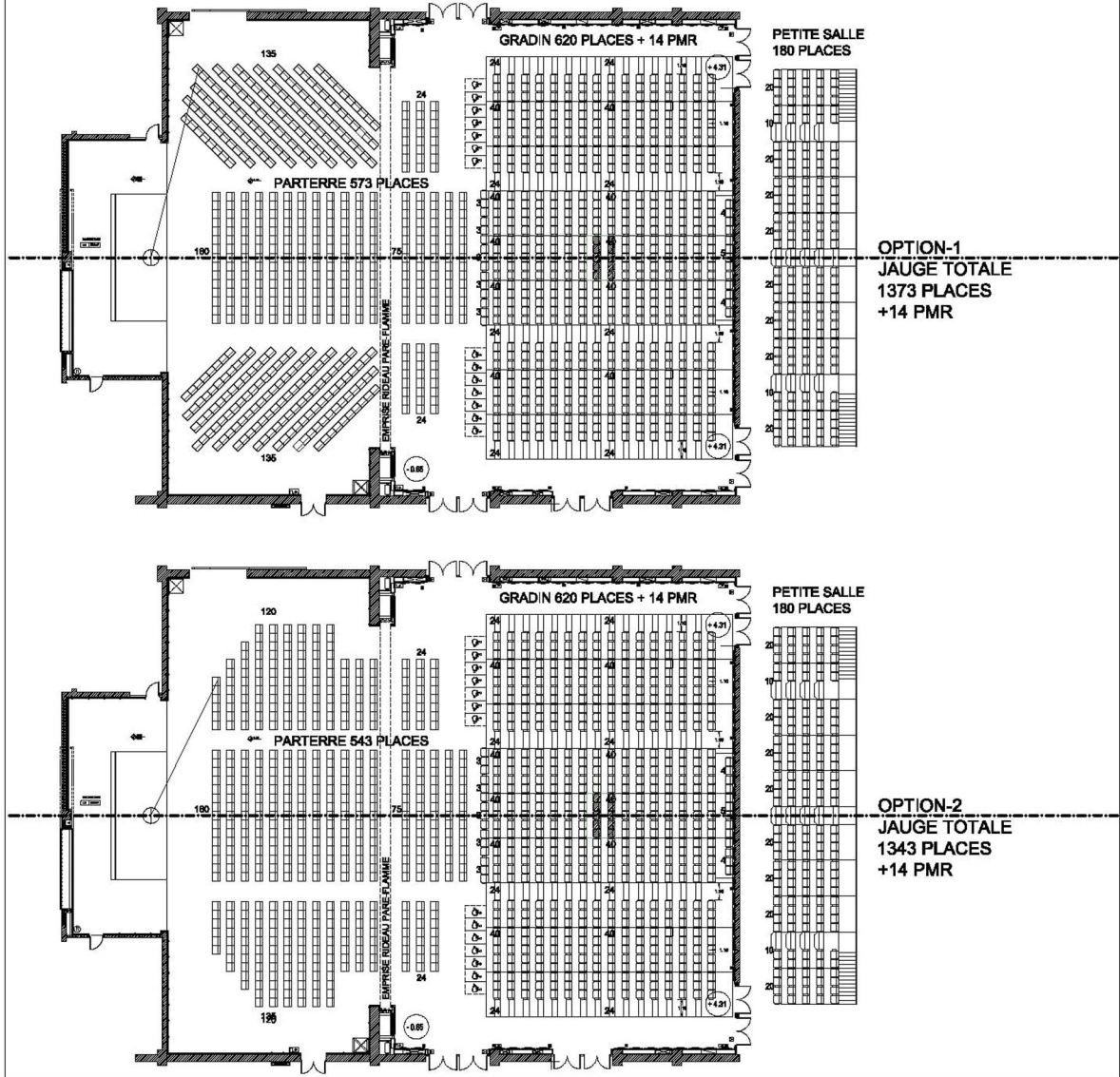
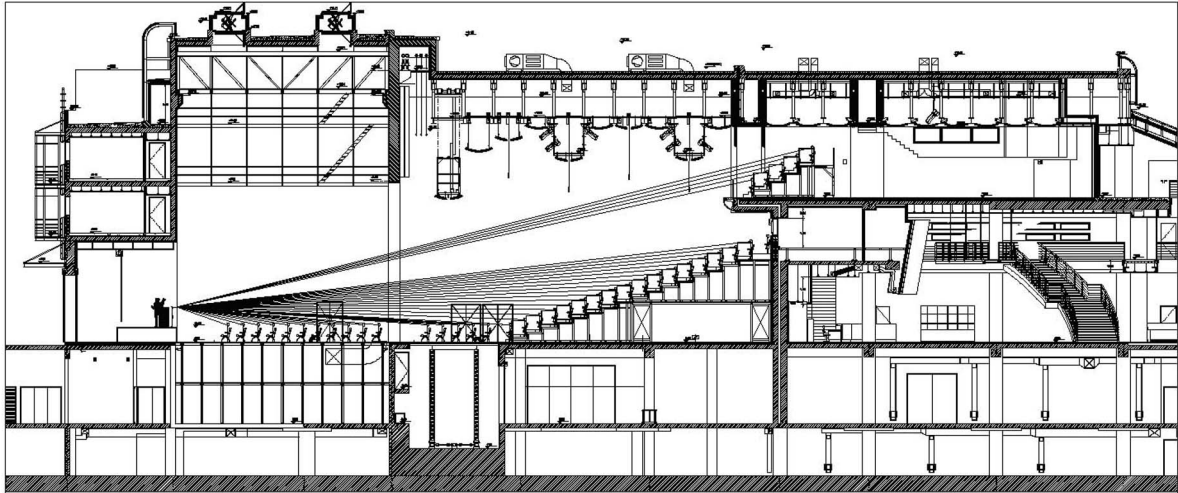
Configuration: Frontal - Extended stage - 1.



THEATRON

Antigone

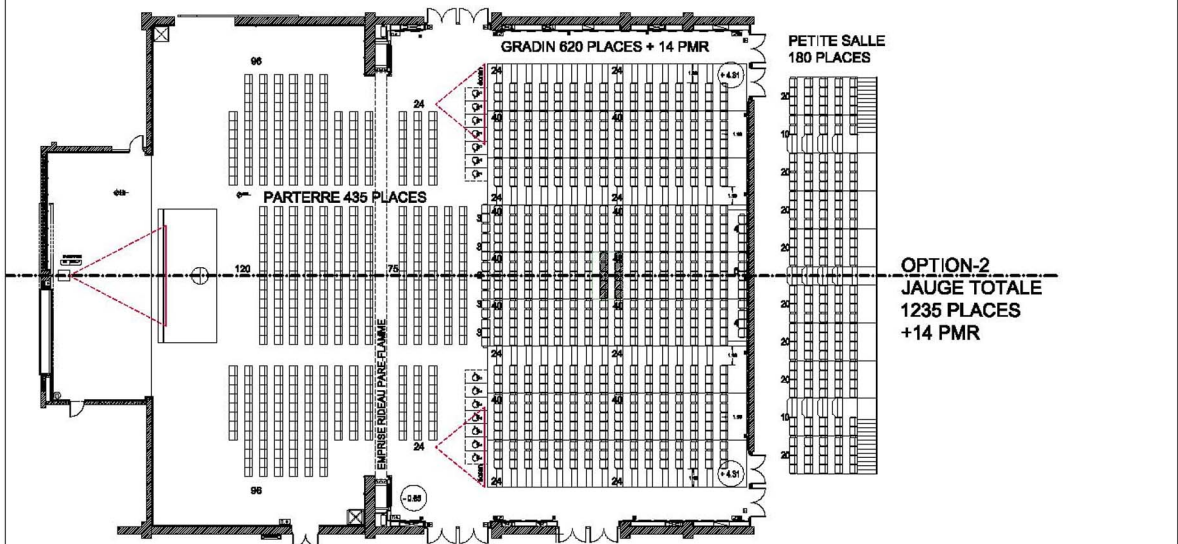
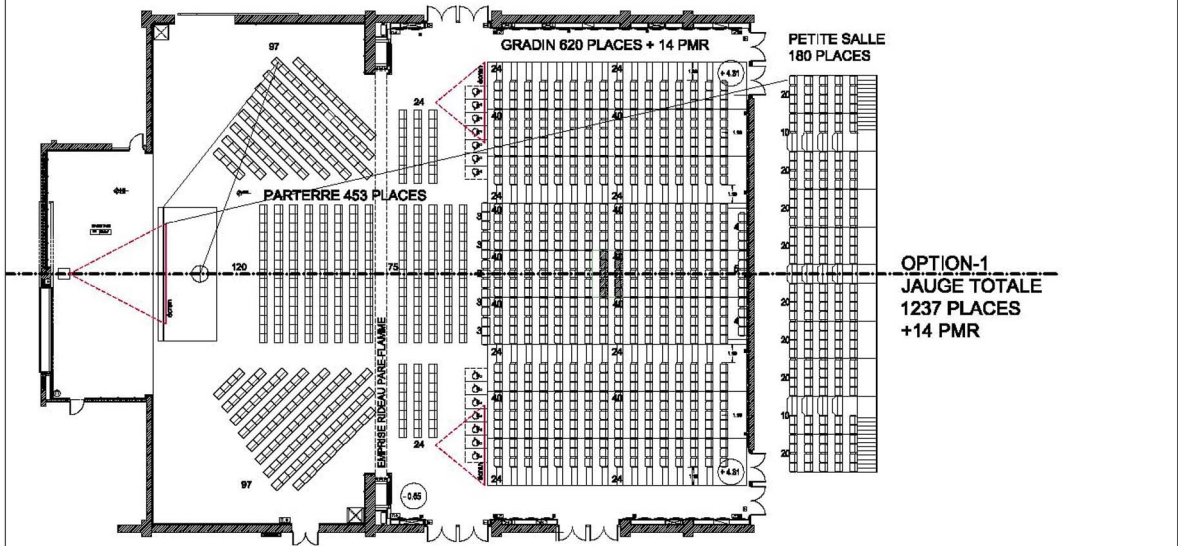
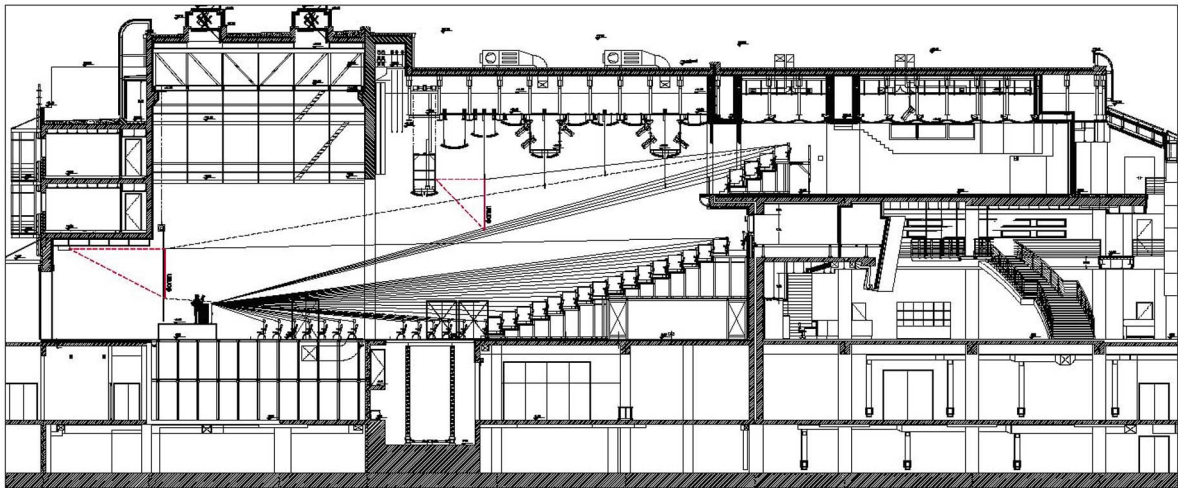
Configuration: Quandri-frontal - 1.



THEATRON

Antigone

Configuration: Congress - OP1.



THEATRON

Antigone

Configuration: Congress - OP2.

Stage configuration and Equipment

. Stage (Auditorium level non elevated)

Width of stage portal :	23.84m
Distance between side bridges :	26.20m
Proscenium portal :	2 elements H11.0m x L3.0m
Proscenium maximum Height :	9.50m
Wall to Wall length:	29.80m
Width:	12.60m
Stage to grid Height :	14.85m
Height under 1 st side bridge :	9.30m
Maximum load capacity :	1000 kg/m ²

. Backstage

Length :	14.40m
Wall to wall Length :	14.75m
Width :	5.80m
Opening Height :	5.95m
Height under Ceiling Grid :	5.50m

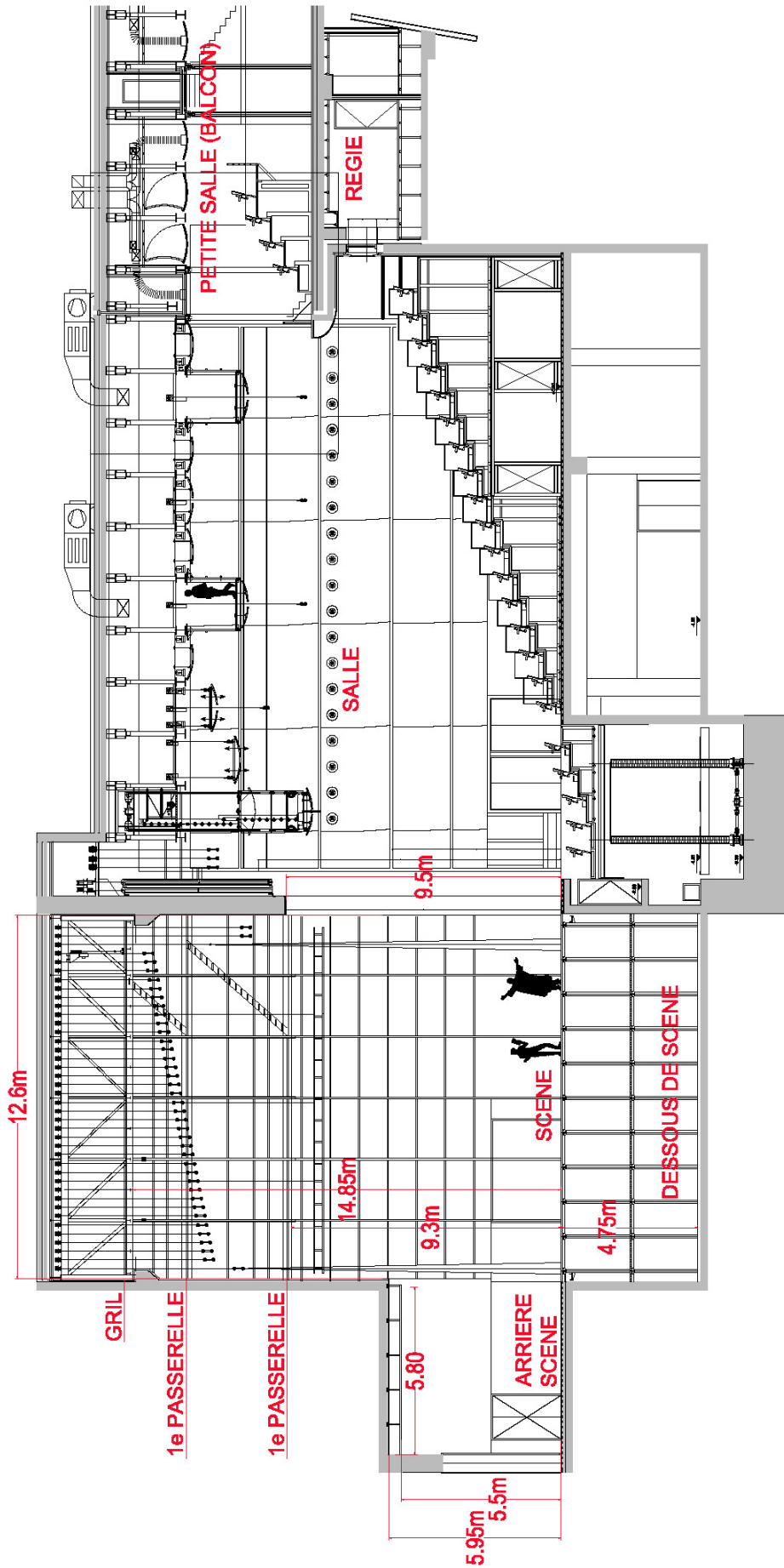
. Trap Room

Trap Room Height :	4.75m
Removable Stage flooring :	24.0x12.0m
Stage trap door :	1.2x1.2m

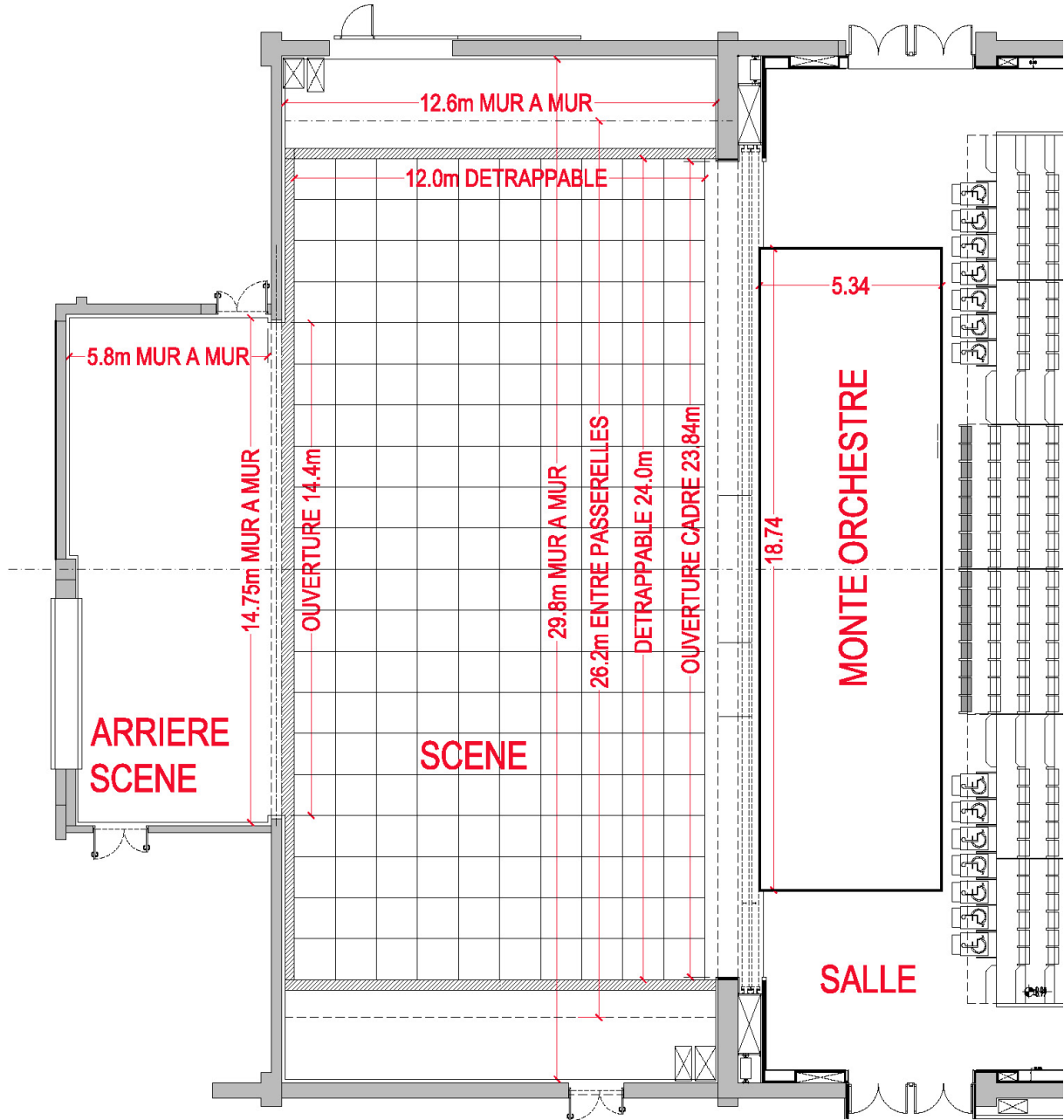
. Machinery

40 motorised fly bars:	Capacity 500kg Length 25.0m Variable speed
2 lateral motorised fly bars :	Capacity 500kg Length 11.0m
10 single point winches:	Capacity 250kg Variable speed
2 levels of side bridges :	Height +9.50m and +13.00m

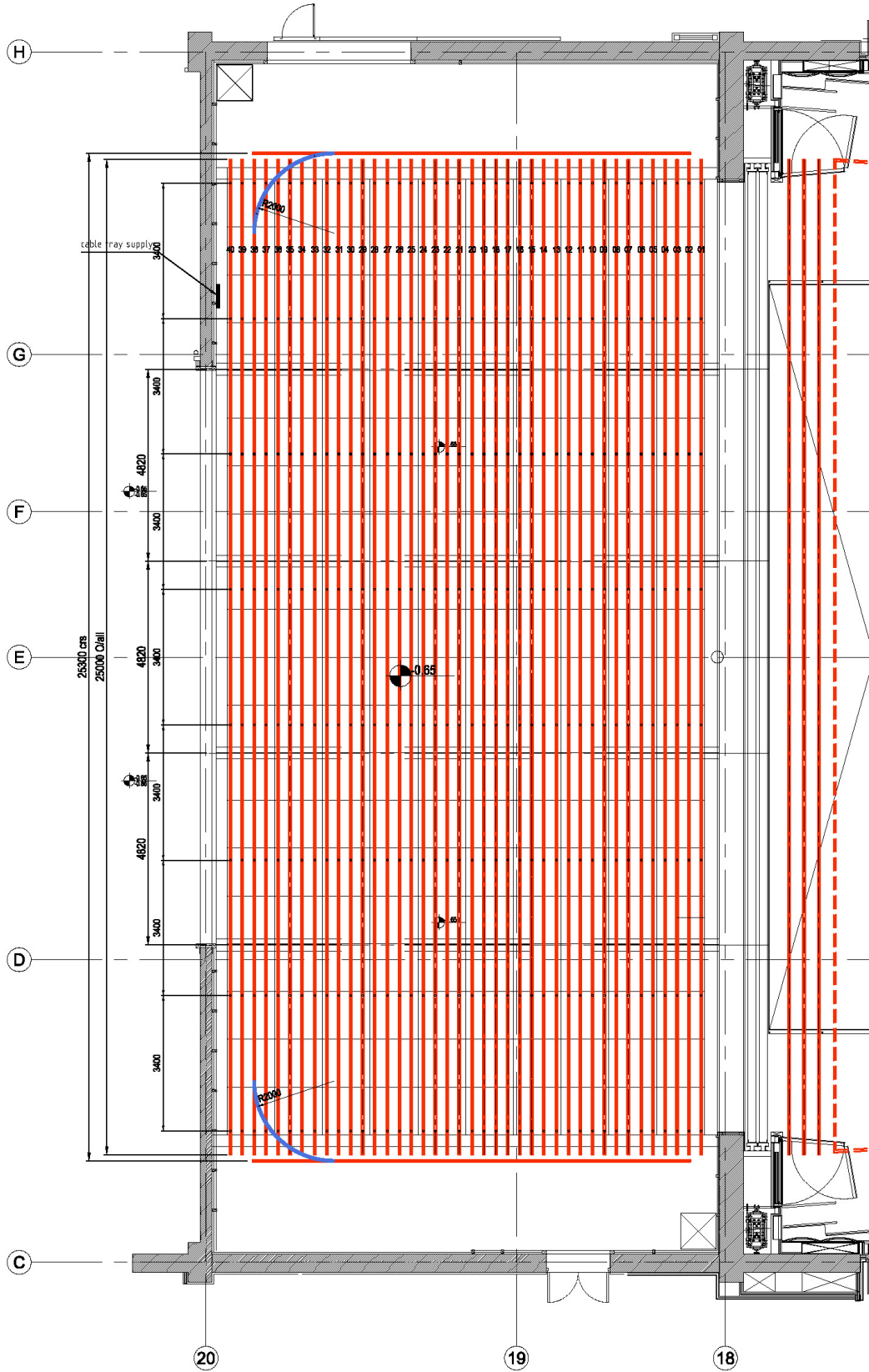
LONGITUDINAL CROSS SECTION



STAGE LAYOUT



FLY BARS ALLOCATION



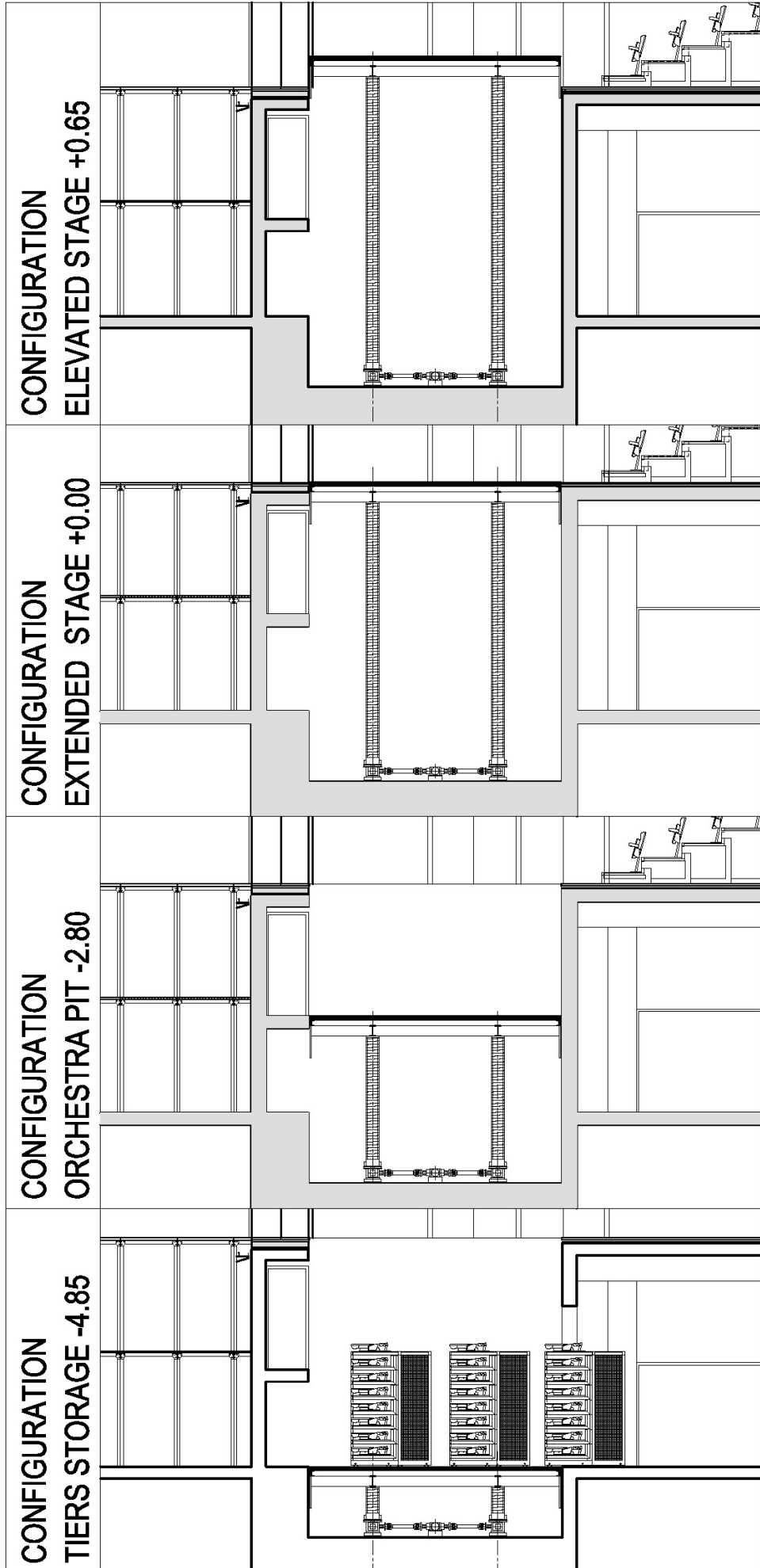
. **Curtains and Drapes**

Proscenium Curtain / Rideau d'avant scène	Height/Hauteur : 11m - Width/Largeur : 13m - Qty/Qté : 1
Grand Valence Border / Frise Lambrequin	Height/Hauteur : 1,40m - Width/Largeur : 25m - Qty/Qté : 1
Backdrop/Rideau de Fond	Height/Hauteur : 10,50m - Width/Largeur : 13m - Qty/Qté : 1
Legs/Pendrellons	Height/Hauteur : 4m - Width/Largeur : 11m - Qty/Qté : 10
Borders/Frises	Height/Hauteur : 25m - Width/Largeur : 4m - Qty/Qté : 6
Tabs/Taps	Height/Hauteur : 11m - Width/Largeur : 13m - Qty/Qté : 4
Rear Projection Cyclo/Cyclo Rétroprojection	Height/Hauteur : 25m - Width/Largeur : 11m - Qty/Qté : 1
Dance Floor/Tapis de danse	Height/Hauteur : 22m - Width/Largeur : 12m - Qty/Qté : 1

. **Orchestra Pit**

Comprises one mobile part and one fixed part. See following plans

.



House equipment

3 Proscenium fly bars:

Capacity 500kg
Length 25.0m
Fixed speed 0.2 m/s.

1 mobile bridge
(over Orchestra pit)

Length 24.5m
Width 1.36m
Stroke 10.6m
Safe overload 1000kg distributed

4 House fly bars:

Capacity 1000kg
Length 22.50m
Fixed speed 0.06 m/s.

1st House cross bridge

Height +11.30m
Length 27.80m

2nd House cross bridge

Adjustable Height
Length 27.80m

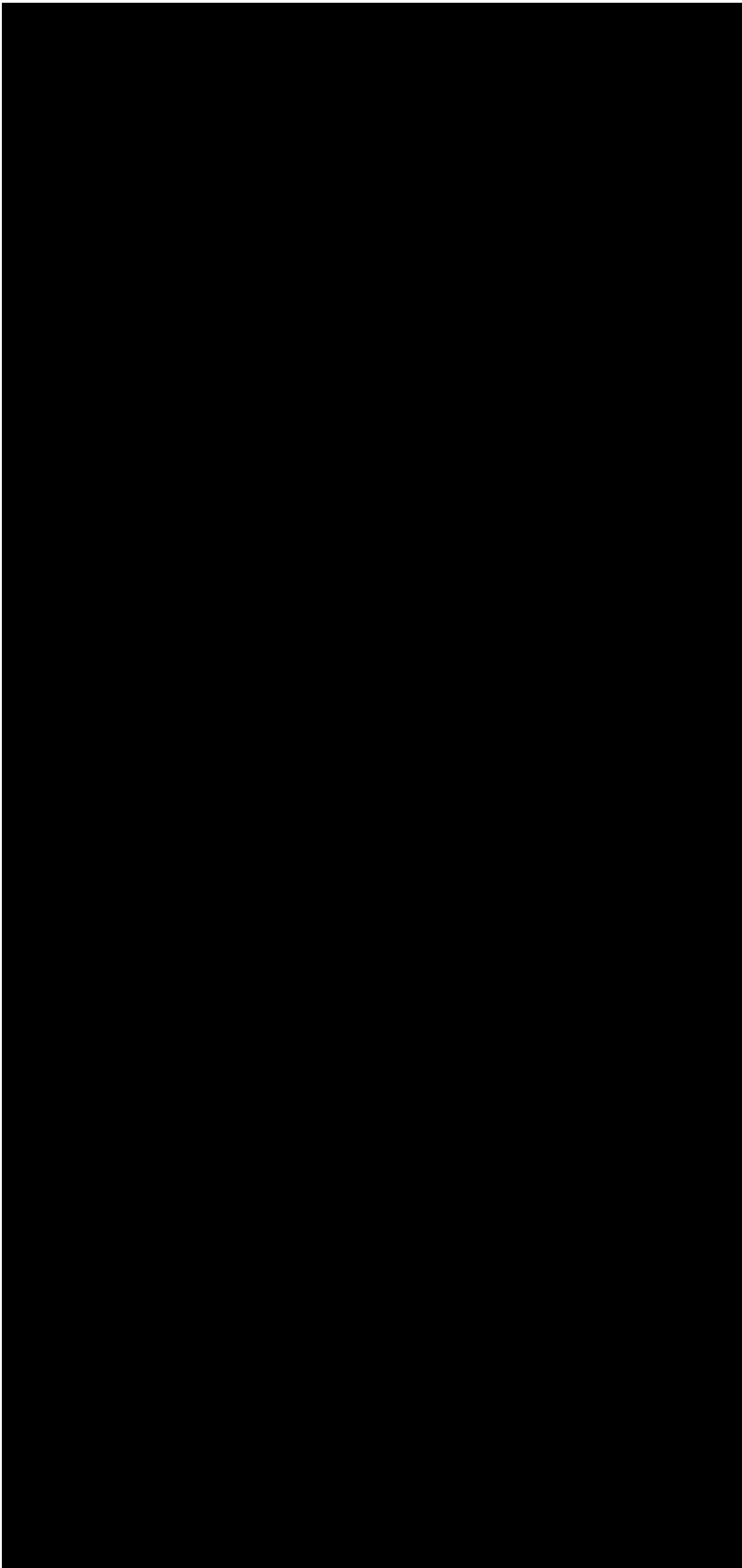
2 House longitudinal bridges

Height +9.50m

Changing Rooms

- **Ground floor Changing Rooms. (-0.65)**
Fast Access permanent Changing Rooms :
1X20.66m² (1 complying WC and shower)
1X18.02m² (1 complying WC and shower + 1 extra basin)

Total 38.68m²



GROUND FLOOR CHANGING ROOMS LAYOUT

- **First Floor Changing Rooms (+4,30)**

Changing Rooms with Private WC:

1X20.08m² (seats 6, basin 1)

1X13,94m²(seats 4, basin 1)

34,02m²

Changing rooms with sharing WC:

1X13.22m² (seats 6, basins 2)

1X13.41μ² (seats 6, basins 2)

26,63m²

Sharing WC area: 11,43m²

(2 toilets, 1 shower, 2 basins)

29,35m²

Extra changing rooms potential:

1X35.35μ²

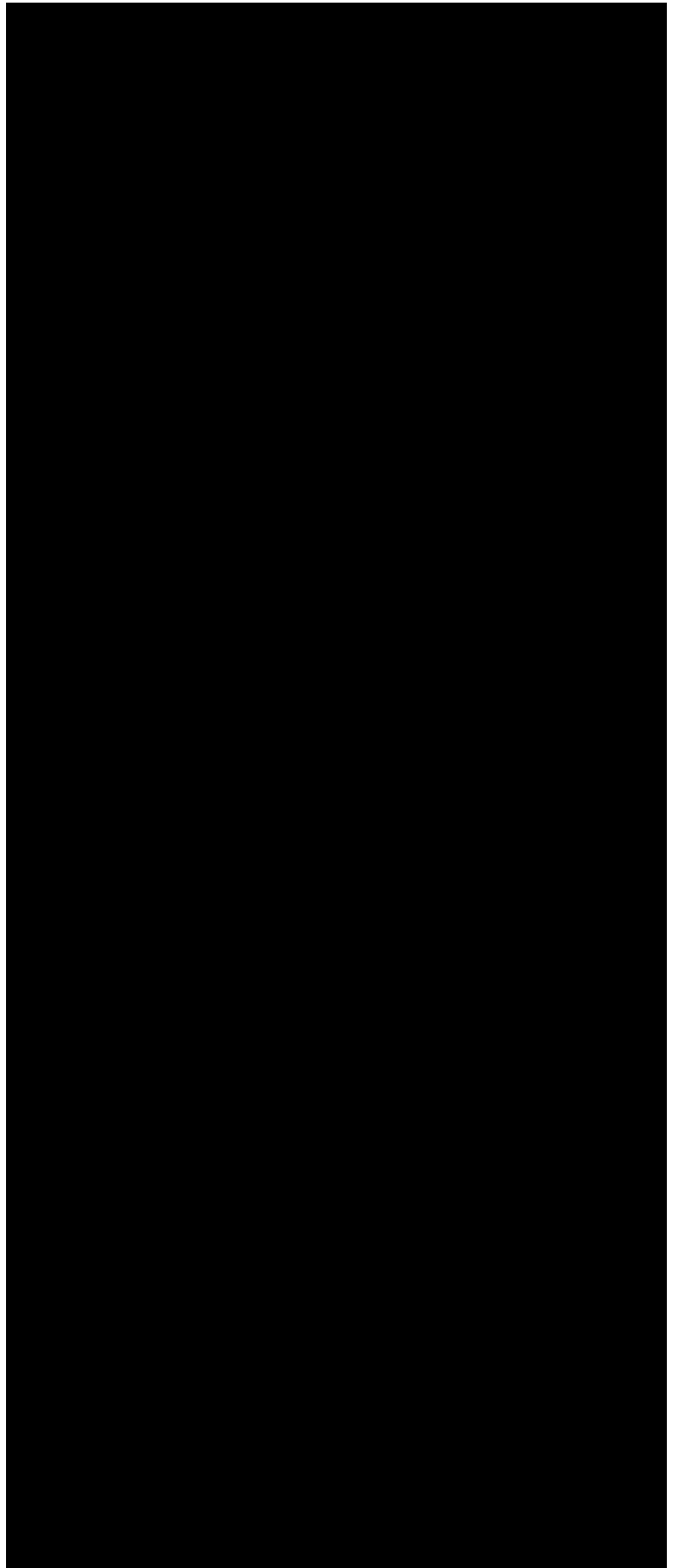
1X24.70μ²

1X26,89μ²

1X90,36μ²

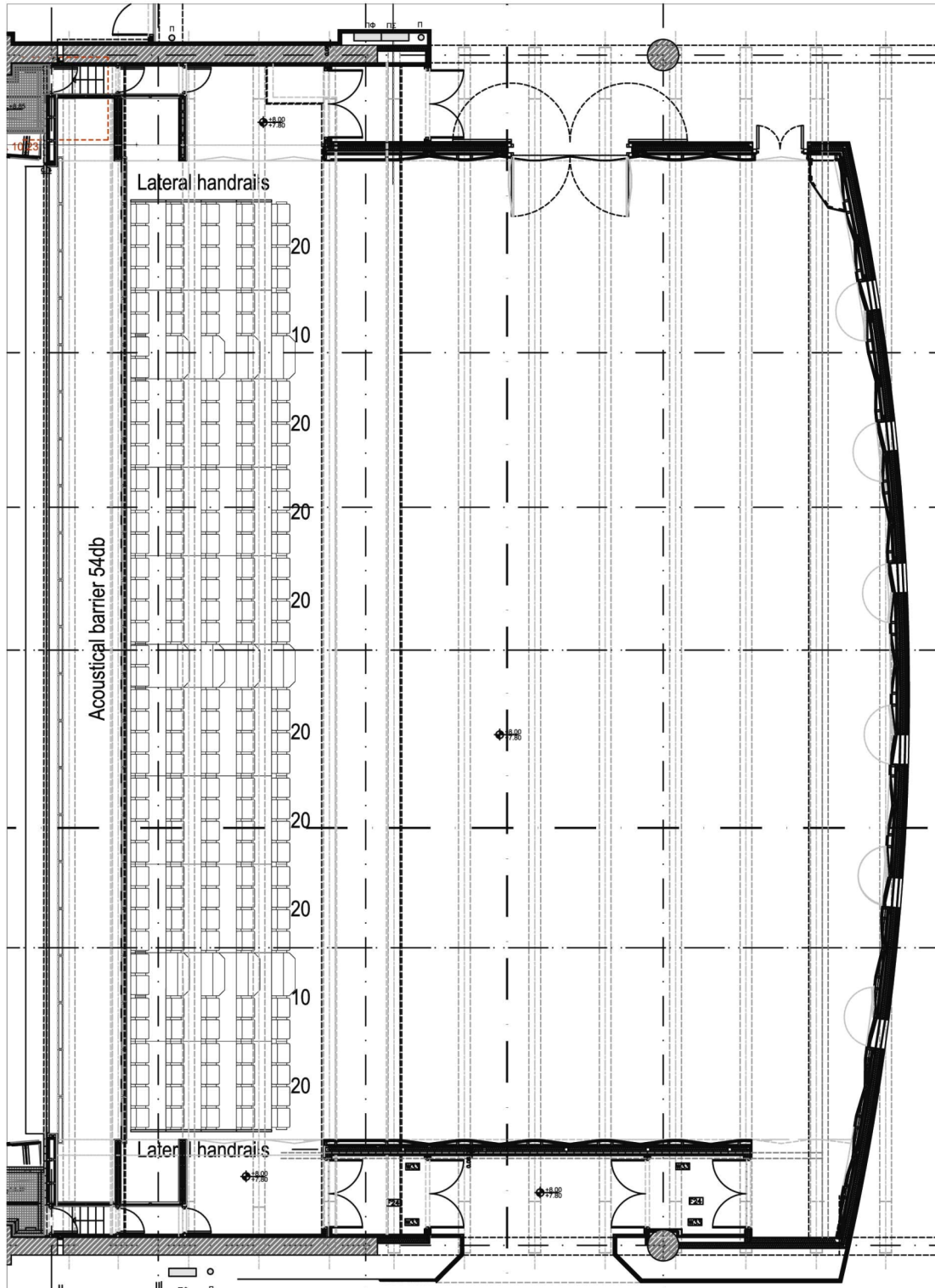
177,30μ²

**FIRST FLOOR CHANGING ROOMS
LAYOUT**



IPHIGENIA HALL

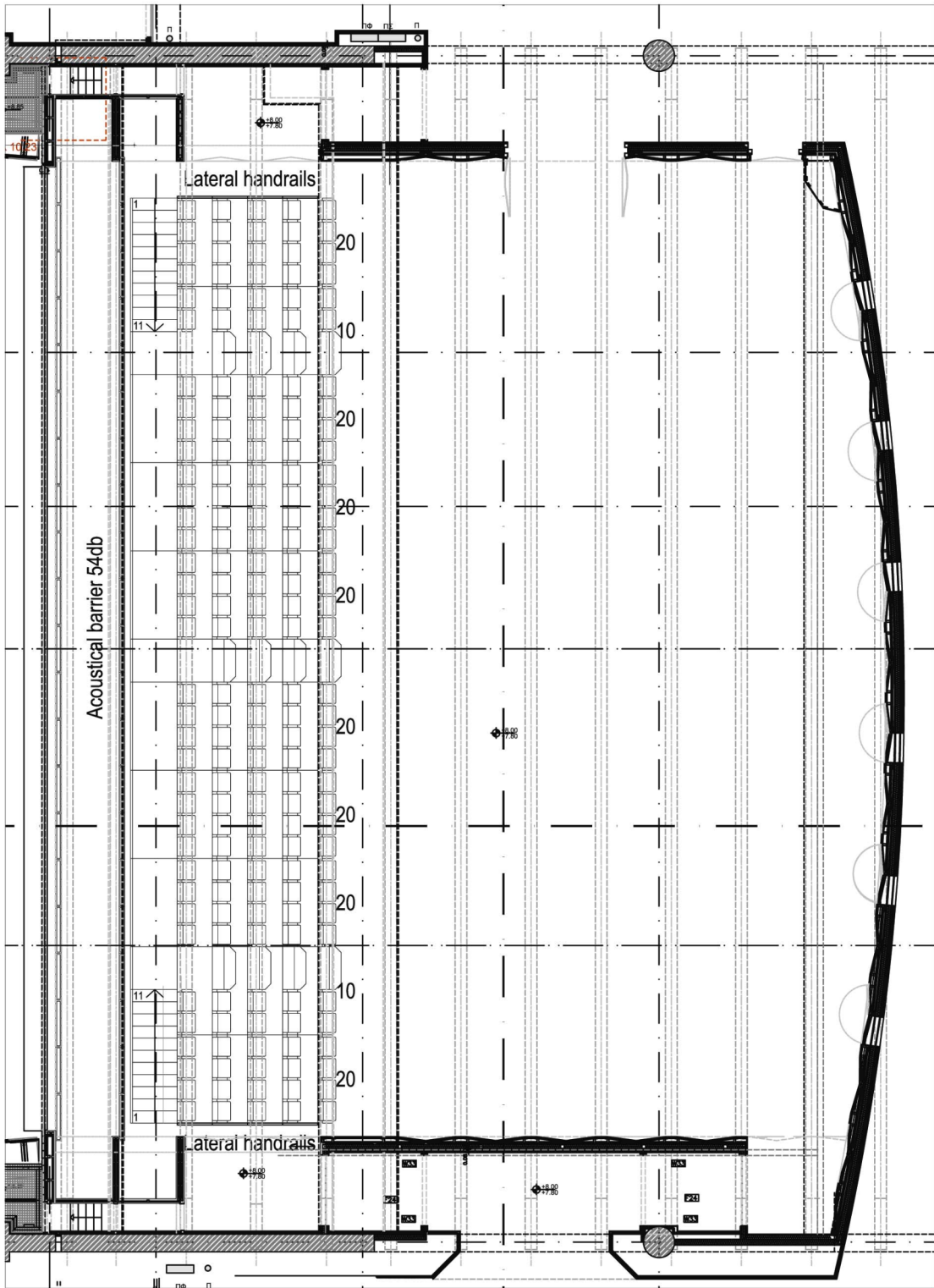
Retractable tier seating. Configurations frontals, bi-frontals, tri-frontal.



THEATRON
Scale 1:125

Tiers seating Iphegenia
Date Oct. 2007

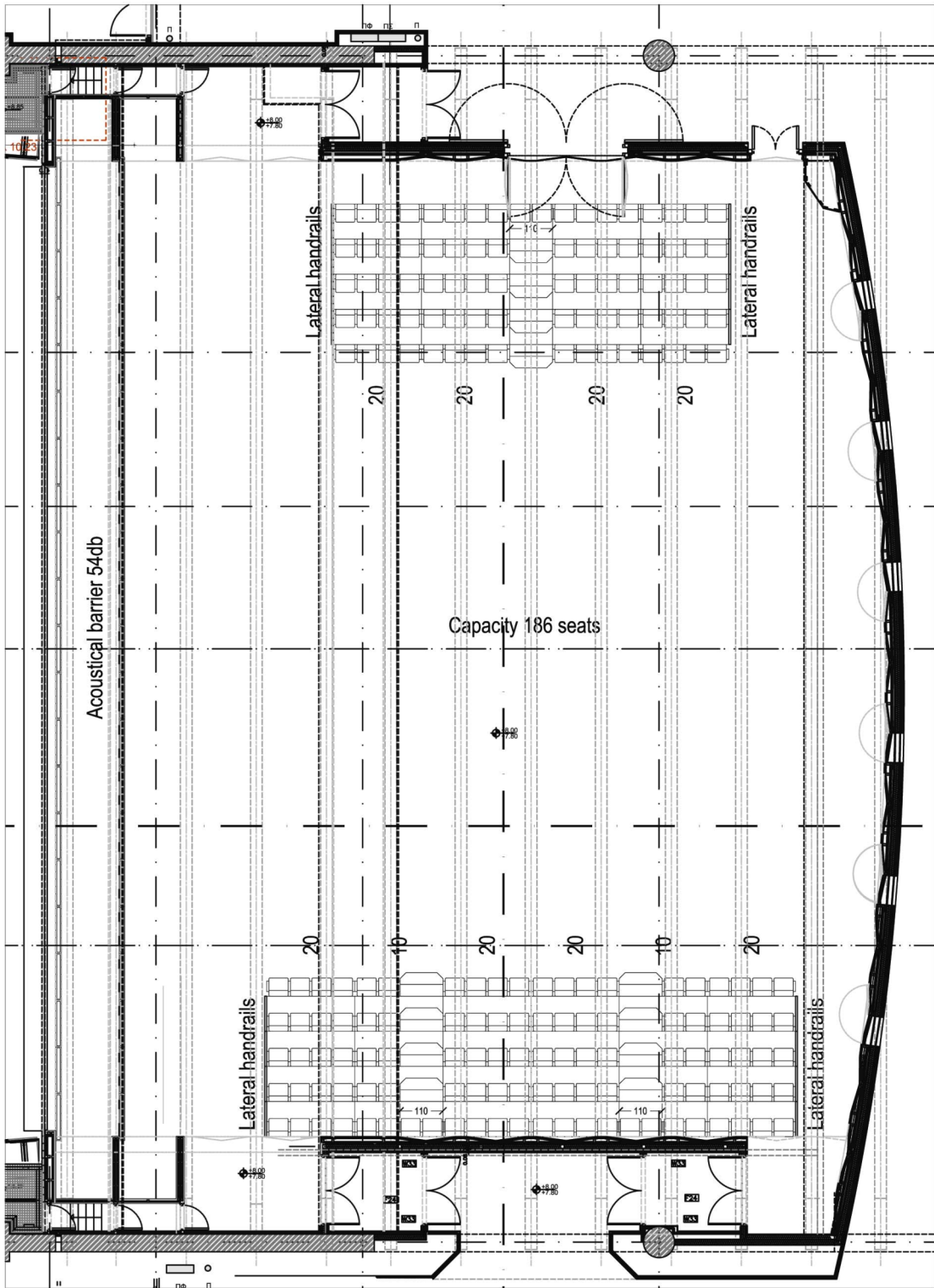
Configuration: Frontal.
Changement A Vue



THEATRON
Scale 1:125

Tiers seating Iphigenia
Date Oct. 2007

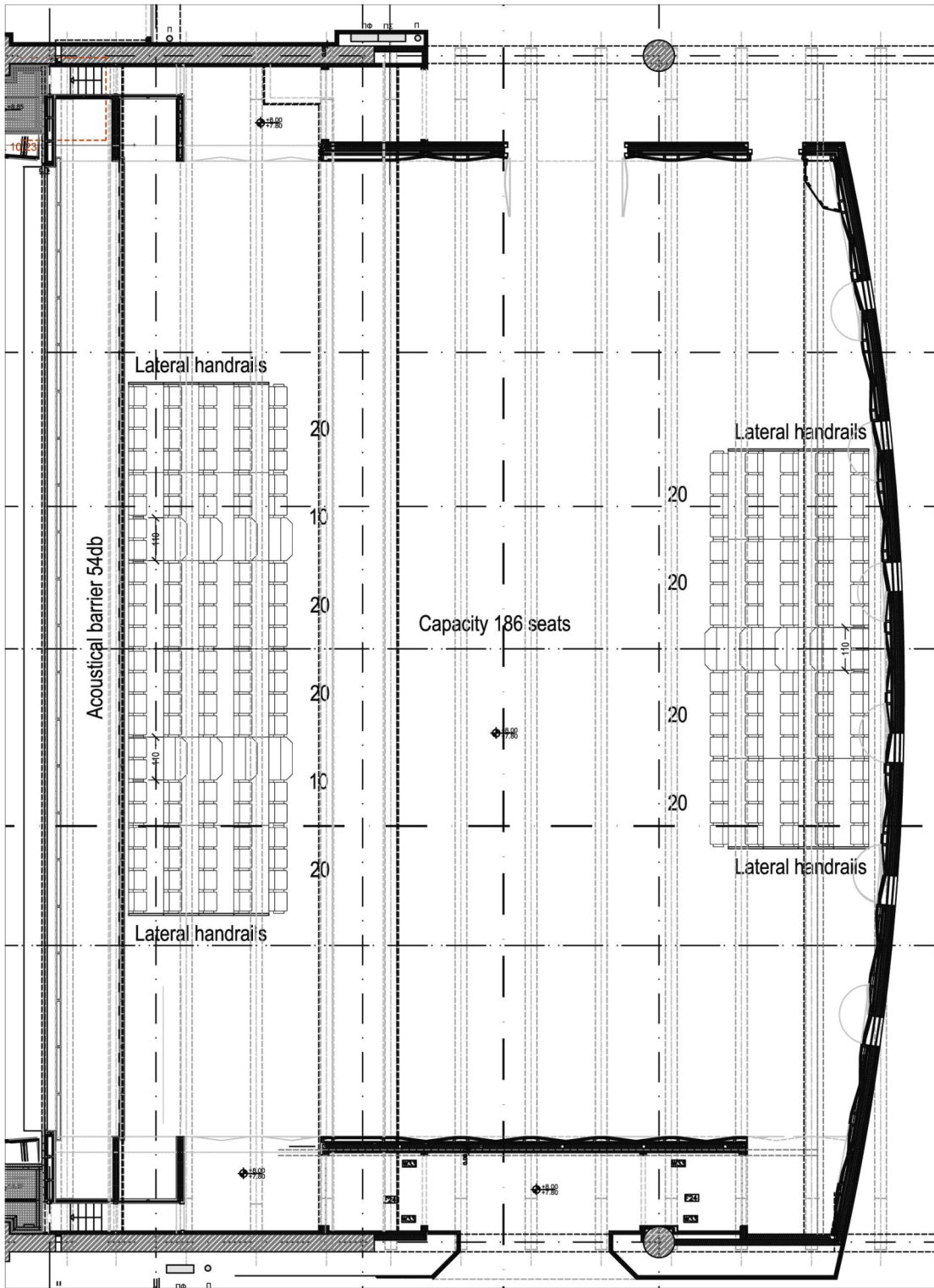
Configuration: Frontal with Rear Circulation.
Changement A Vue



THEATRON
Scale 1:125

Tiers seating Iphigenia
Date Oct. 2007

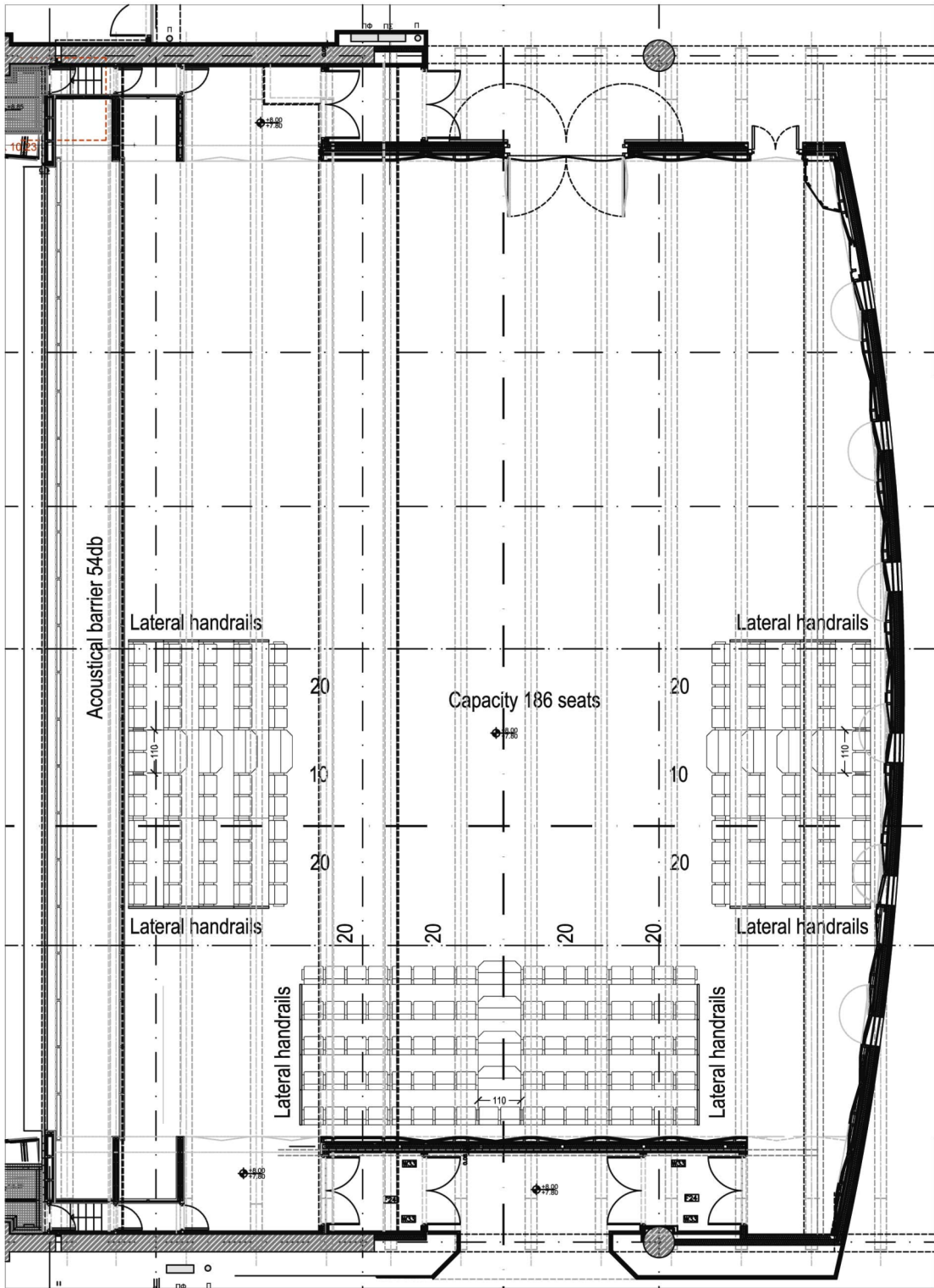
Configuration: Bifrontal-1.
Changement A Vue



THEATRON
Scale 1:125

Tiers seating Iphigenia
Date Oct. 2007

Configuration: Bifrontal - 2.
Changement A Vue

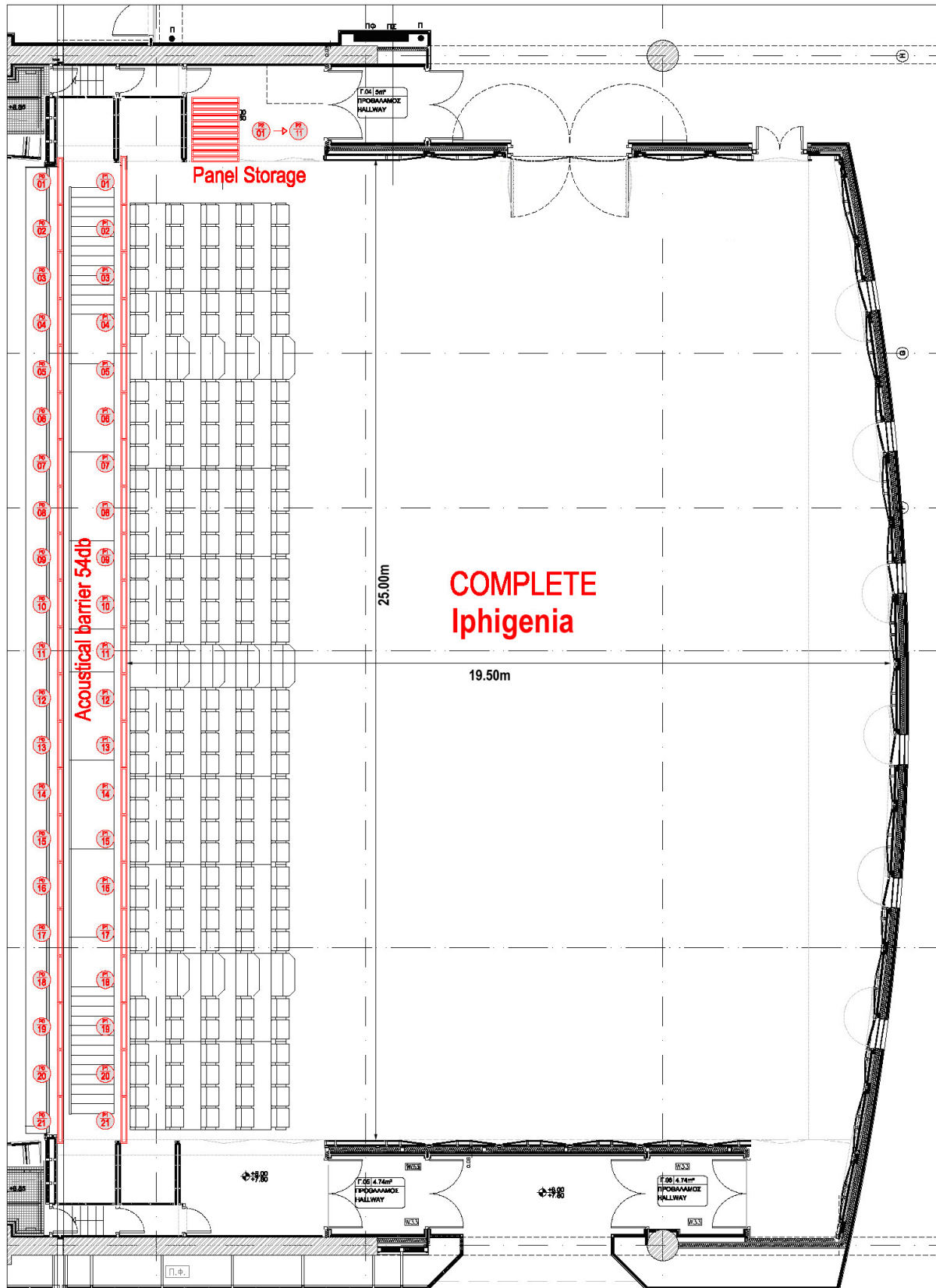


THEATRON
Scale 1:125

Tiers seating Iphigenia
Date Oct. 2007

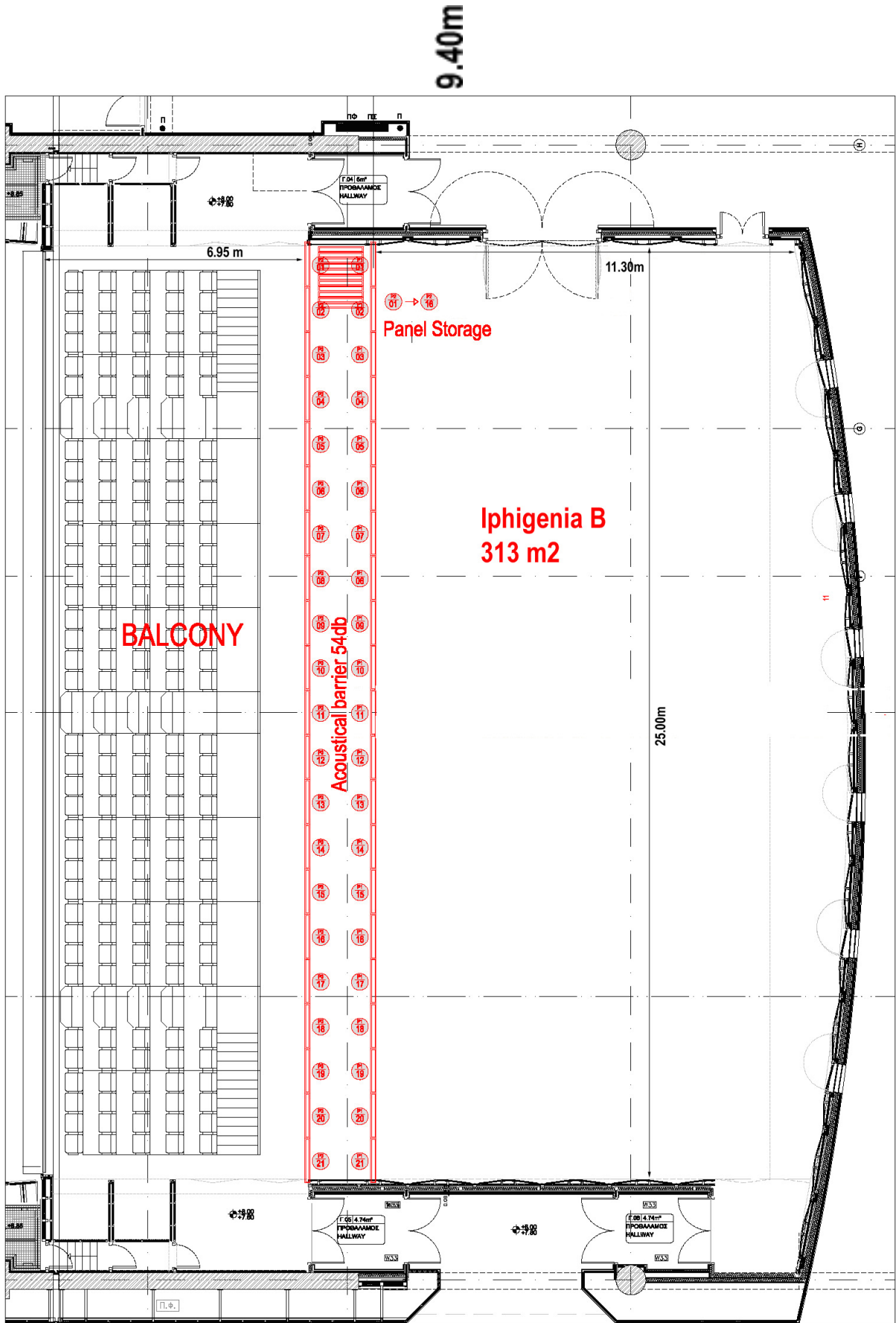
Configuration: Tri-frontal.
Changement A Vue

Iphigenia Hall is equipped with acoustic partitions providing the option to integrate as upper balcony for Antigone Hall or splitting in multiple independent areas.



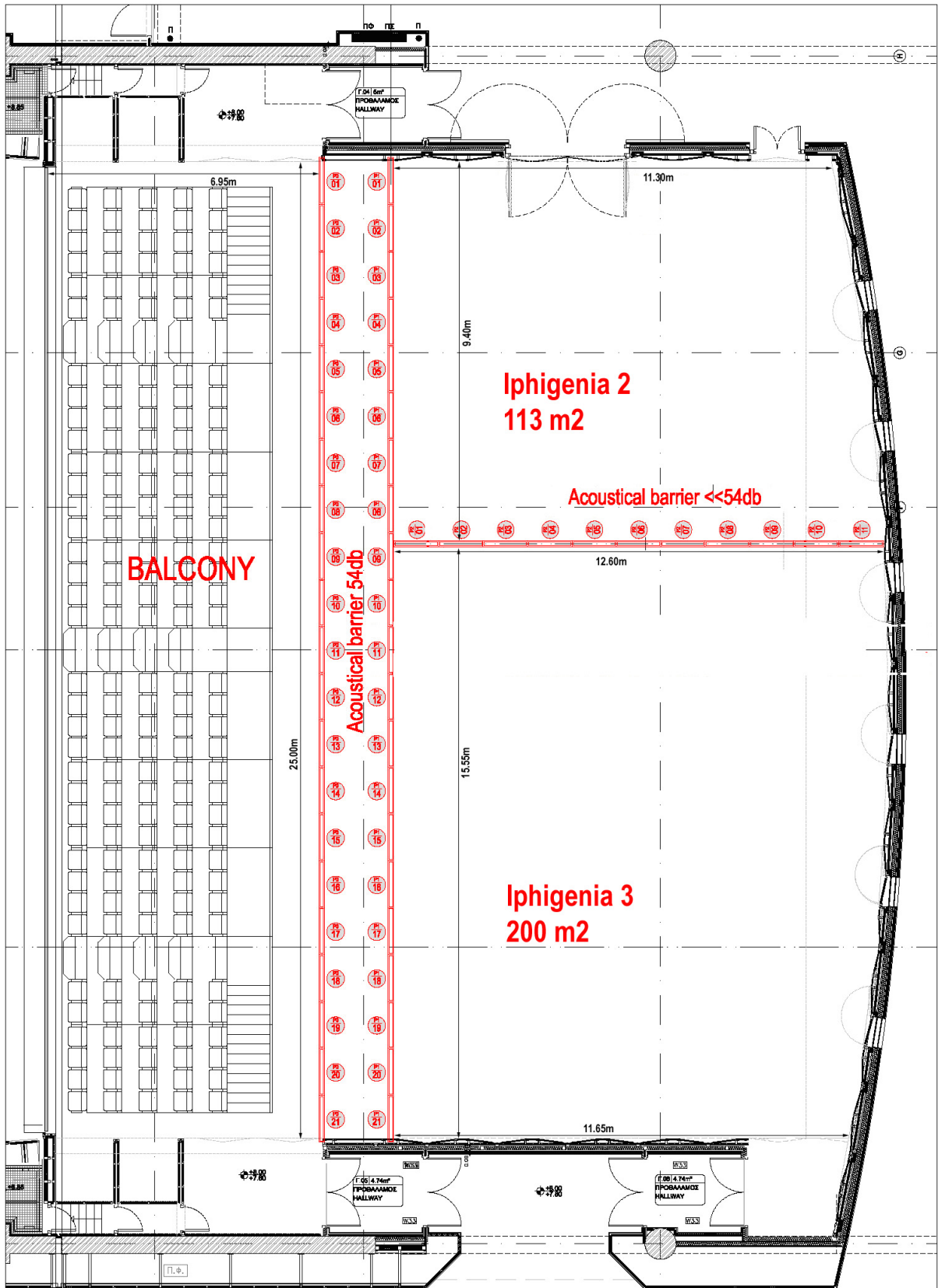
THEATRON Iphigenia. Space Modulation.
 Changement A Vue Configuration 1: Complete Hall .

Scale. 1:125



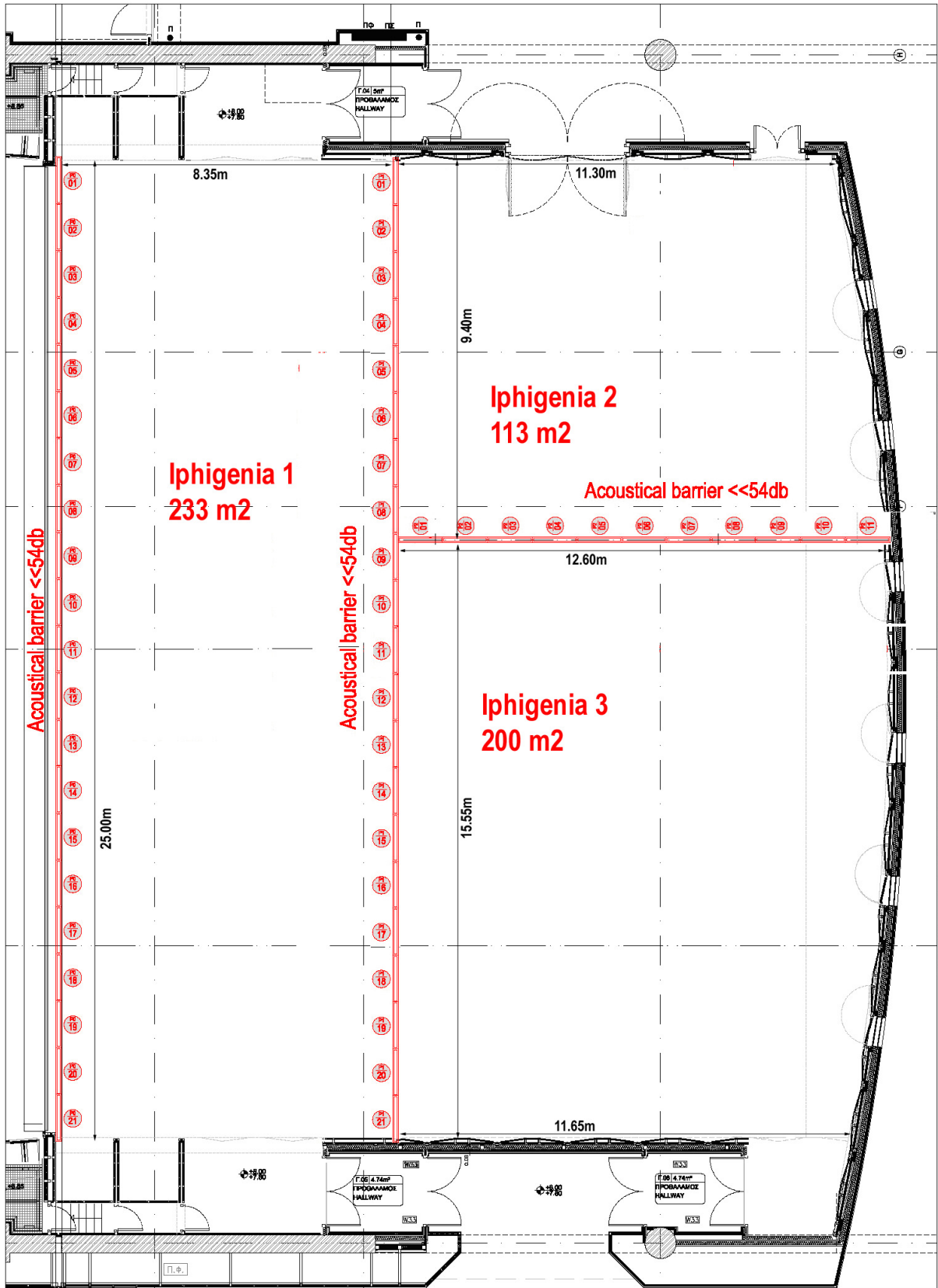
THEATRON Iphigenia. Space Modulation.
 Changement A Vue Configuration 4: Balcony + Iphigenia B

Scale. 1:125



THEATRON Iphigenia. Space Modulation.
Changement A Vue Configuration 4: Balcony + Iphigenia 2+ Iphigenia 3

Scale. 1:125



THEATRON Iphigenia . Space Modulation.
 Changement A Vue Configuration 3: Iphigenia 1,2 & 3

Scale. 1:125

Capacity

180 seats maximum & 400 moveable seats.

Dimensions

Length : 25.00m
Maximum width : 19.60m
Height: 4.30 m

Scenery Equipment

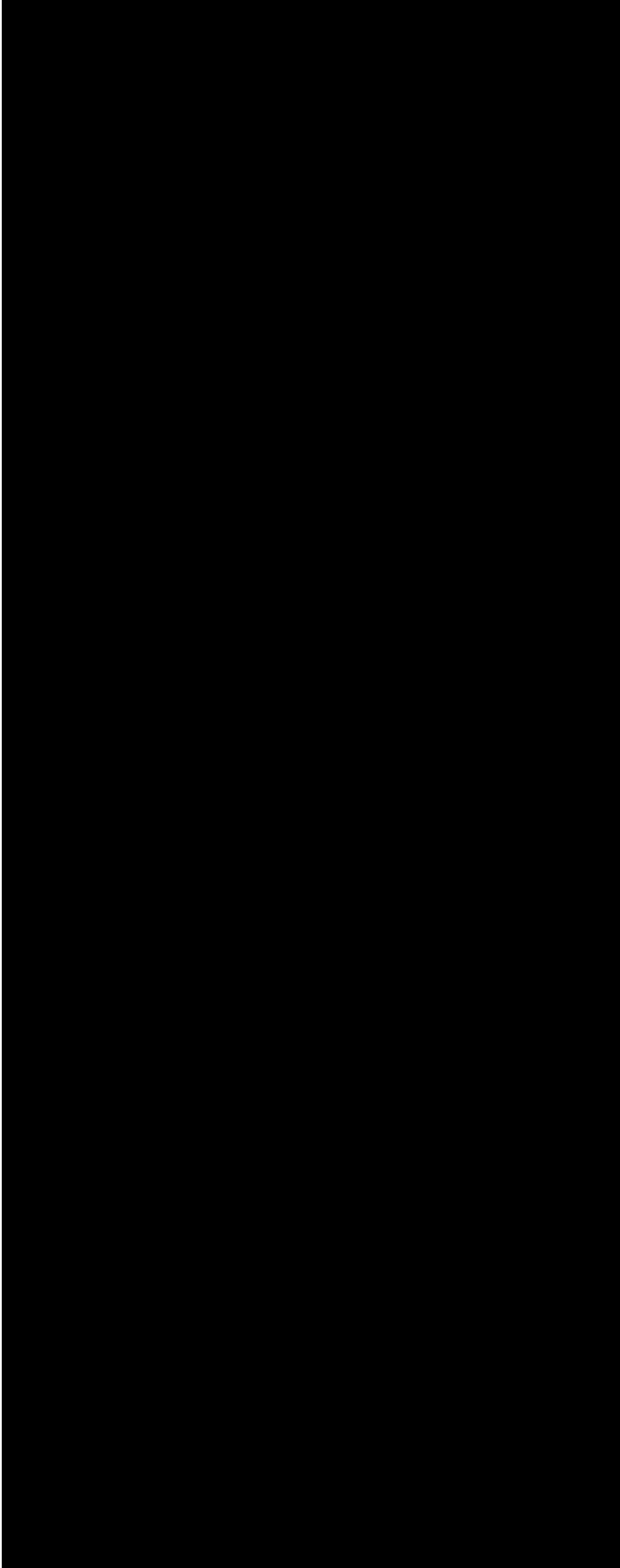
Grid on top ceiling

Changing rooms

-Second Floor Changing Rooms (+8,00)

Changing Rooms with Private WC:	1X20.08m ² (seats 6, basin 1)
Changing rooms with sharing WC:	1X13.21μ ² (seats 6, basin 2)
	1X13.41μ ² (seats 6, basin 2)
	1X9.15μ ² (seats 2, basin 1)
Sharing WC area:	17,92μ ² (3 toilettes, 1 shower, 3 basin)
Sitting area :	31.76μ ²

2nd FLOOR, CHANGING ROOMS' LAYOUT



EQUIPMENT

Scenery equipment

Lighting

DESIGNATION	QTE
<u>Lighting Consoles</u>	
Lighting Console dmx/artnet Roadhog full boar	3
Lighting Console dmx ADB Tango 48	1
<u>Dimmers</u>	
Dual 3KW dimmer modules ADB DD3/P2x3/M/S	165
Dual 5KW dimmer modules ADB DD3/P2x5/M/S	72
Module Direct 2x3KW ADB DD3/2x3ND/M/S	16
Portable Dimmer Memopack 15 ADB 6x3KW	6
Portable Dimmer Memopack 15 ADB 3x5KW	6
Touring rack(Memopack 30)24X3KW	3
<u>Lights</u>	
1KW PC ADB C101	50
2KW PC ADB C201	20
2KW Fresnel ADB F201	32
5KW Fresnel ADB SH50	10
1KW Cyclorama ADB ACP 1001	30
Zoom profile 1,2KW - 15°-38° ADB DW105	42
Zoom profile 1,2KW - 38°-57° ADB DVW105	25
Zoom profile 2KW - 15°-31° ADB DS205	20
Zoom profile 2KW 30°-54° ADB DVW205	15
Zoom profile Daylight 12°-30° ADB Warp	5
Par 64 Thomas	16
Follow Spot Projector 1,2KW HMI R.Juliat - Korrigan	3
Automated luminaires Spot - CLAY PAKY ALPHA PROFILE 1200	2
Automated luminaires Spot - Studio Spot CMY - High end System	12
Automated luminaires Wash - Studio Color MSR1200 - High end System	10
LED PAR LIGHTS - THOMAS PIXEL PAR 90 RGB	12
<u>Additional Material</u>	
Colour Scrollers – Rainbow 8” Colour Changer	24
Ultra Violet Wash Light - AMERICAN DJ - UV PANEL HQ	20
Strobe - Martin - ATOMIC	8
LED STAR CURTAIN GERRIETS - SHOW LED CLASSIC 7x5m	3
Smoke Generator - Fan Fogger	1
1 Ton Chain Hoist	4

Audio / Video

<u>Production Intercom System / Intercom</u>	
Beltpack Riedel	18
Wireless Beltpack	8
<u>Cue Light System</u>	
<i>Cue light remote station</i>	20
Cue light wall station	8
<u>Stage Management Concole</u>	
Ethersound speakers Fostex	1
Video Monitors Dual Marshall	1
<u>Sur Titling</u>	
Sur Titling Software Figaro Sys.	1
Sur Titling Screen 3X1m	1
<u>Audio System</u>	
Audio production mixer + Stage Rack (Control) Innovason SY48 Pro FX	5
DSP audio mixer Yamaha dme24n	3
C.R. Monitor Speaks Tannoy Precision 8d	4
Full Range Speaker Unit d&b audiotechnik Q1	18
Sub-bass Speaker Unit d&b audiotechnik Q-SUB	16
Front & Balcony Fill system d&b audiotechnik Q10	4
Front & Balcony Fill system d&b audiotechnik Q7	8
Stage Monitors d&b audiotechnik MAX 12	6
Stage Monitors d&b audiotechnik MAX	4
Stge Monitors d&b audiotechnik M4	6
CD Player Tascam CD-01U Pro	4
Monitoring Headphones Sennheiser K 171 Studio	5
Feedback Eliminator (for insert channels) Sabine AFS 224	3
<u>Radio Microphone</u>	
Ear Worn Microphone Sennheiser HSP-2	4
Lavallier Microphone Sennheiser ME-102	8
Body pack transmitter for above Sennheiser SK5212	10
Hand held Microphone Sennheiser SKM5200	10
Hand held Microphone Sennheiser B-5000-2	10
Hand held Microphone Sennheiser MD-5235 N	10
Radio Microphone Sennheiser EM1046 MF	2
<u>Microphone Pool</u>	
AKG 535 C535EB	3
AKG C1000 C1000S	2
AKG C3000 with H-100 shock mounts C3000B	4
AKG C418 C518M	2
AKG C419 C519M	1
Mic Base AKG SE300B	8
AKG CK 91	8
AKG CK 94	2
AKG CK 98	2

AKG GN 50	5
AKG CK 31	5
Dynamic Stage Mic Audio Technica AT4073a	2
Flexible suspension Audio Technica AT8410a	2
Dynamic Stage Mic Audio Technica PRO 25AX	1
Dynamic Stage Mic Beyerdynamic M88TG	1
Dynamic Stage Mic Crown PCC 160	4
Dynamic Stage Mic Shure SM57LCE	3
Dynamic Stage Mic Shure SM58LCE	4
Dynamic Stage Mic Shure SM81LC	1
Show Relay	
24''(19:9)LG Flat Screen Monitors	14
Monitoring Loudspeaks Fostex	23
Show Control	
Show Control PC Medialon GD_SCMII	2
PTZ Camera System	
HD-SDI Camera + Lens Sony BRC H700 HD	8
Conference System	
Central Control Unit Bosch DCN-CCU	2
Delegate Conference Unit portable Bosch DCN-DISDCS-D	53
Chairman Conference Unit Portable DIS Bosch DCN-DISDCS-D	2
Lightweight Headphones Bosch LBB3443/00	55
Interpreter Station 32 Channels fully Digital Bosch DCN-IDESK-D	15
Interpreter Headset Combined Headphone Bosch LBB9095/30	15
Projection System	
Foldable Screen (4.88 x 3.66 m)4:3 front	7
Foldable Screen (4.88 x 3.66 m)4:3 back	1
Large flyable Wide Projection Screen for auditorium 20x5,6m	1
Large flyable Wide Projection Screen for hall 2 (6 x 2.5 m) (1front,1back)	2
Multi purpose Projectors Barco SLM R12+	18
Short Through Lens for above Barco TLD 0.8 wide lens (included with the projector)	10
Long Through Lens for above Barco TLD 5.0 - 8.0 tele lens	4
Int/te Lens for above Barco 1.6 - 2	4
Int/te Lens for above Barco 2.0 – 2.8	4
Int/te Lens for above Barco 2.8 – 5.0	4
Int/te Lens for above Barco 1.2	2
Flight cases for projectors Custyom	18
Flight cases for Lenses	28
Moving Head Projector High End Systems DL2 Digital Light	4
Auto Yoke (v-base barco slm r 12)	3
Video Hall	
Video Control Surface Barco Folsom ScreenPro-II Controller (H2)	1
Video Processor Barco Folsom ScreenPro-II (H2)	2
Video Control Surface Barco Folsom Encore	1
Video Processor Barco Folsom Encore Processor 3M/E HD-SDI	3

Video Server HD Video Server Alcorn DVM-HD/Pro	5
Video Server Doremi V1-UHD-197T	1
DVD Recorder 160GB HDMI LG RH-277H	2
Blu-ray/HDD/DVD Player LG BH200	2
Professional DVD Player Pioneer DVD V8000	2
<u>Audience Response System</u>	
RF voting Handsets Fleetwood Group	250
<u>Virtual Sceneray System</u>	
Flying Frame for projection screen picture size 7.00x5.62m (screen 4)	2
Matt white non-perf web&eye screen for SCREEN-4	2
Translite Grey Rear Projection web & eye for SCREEN-4	2
Crystal web & eye screens for SCREEN-4	2
Flying Frame for projection screen picture size 5.0x 3.750m	4
Matt white non-perf web&eye screen for SCREEN-4	4
Translite Grey Rear Projection web & eye for SCREEN-4	4
Crystal web & eye screens for SCREEN-4	4
Flying Frame picture size 10.00 x 7.50m (screen 5)	2
Matt white non-perf web&eye screen for SCREEN-5	2
Translite Grey Rear Projection web & eye for SCREEN-5	2
Theater Projection Gauge chain weghted c/w ties, 20x 7.5m	1
Projected Scenery Media Servers 8 7 th Sense Delta Server	4
Rackmounted Graphics Rendering & Backgrounds PC Dell T 7400	5
<u>Translation Booths</u>	
Permanent Booths	5
Mobile Booths	2

Contact

Cultural Centre “Hellenic Cosmos”
254 Pireos street Tavros 177 78
Tel: +30212 254 0000
Fax: +30212 254 0123
hellenic-cosmos@fhw.gr

Regarding information about artistic events and conferences you can contact:

Giatsios Thrassyvoulos
Hellenic Cosmos Cultural Activities Director
giatsios@ime.gr

Skandamis Dimitris
“THEATRON” Supervisor
dskan@ime.gr

Lymperopoulou Eleni,
Secretariat Support

Tel.: +30212 254 0300